



INSDAG Architecture Award Competition 2021

THE GURUGRAM
INTERNATIONAL SCHOOL

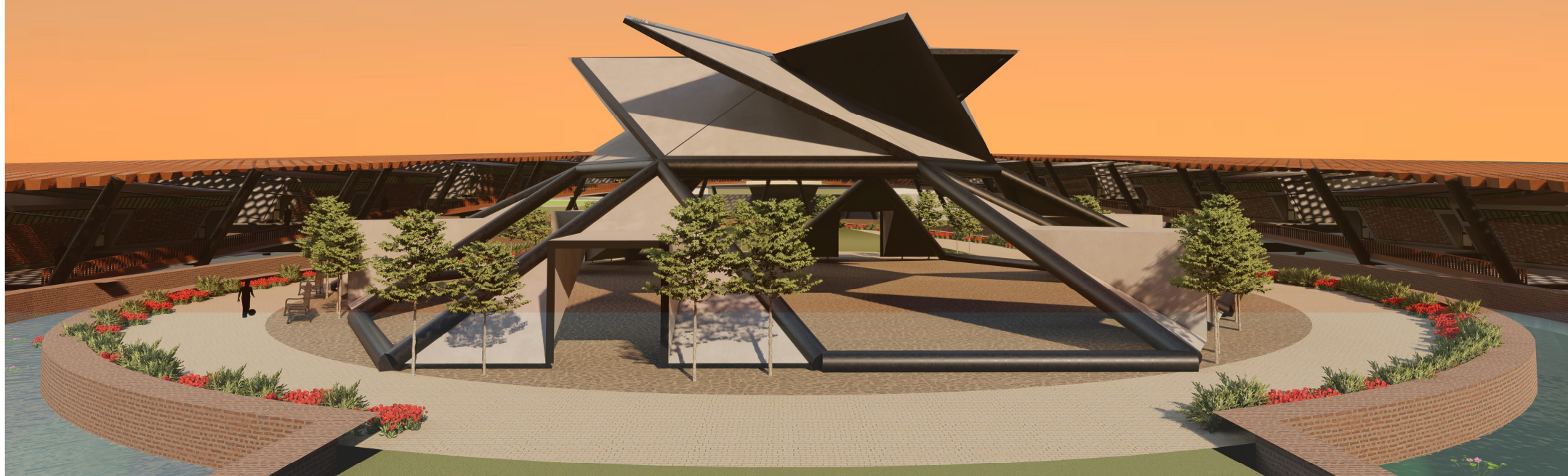
SA 45

ABYAN MOHAMMED

ASILA KHILJI

KUNAL JAIN

SEGHA G



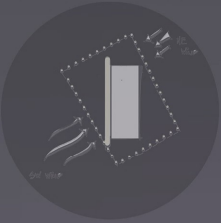
THE GURUGRAM

INTERNATIONAL SCHOOL

A place filled with culture, overflowing with folk tradition.
The tradition and heritage of Gurgaon is the foundation of the now industrial dominance of the nation.
The lives of the people of Gurgaon revolve around traditional Music, Dance and Theatre, therefore the notion was to bring that thinking into the working of our concept.

The design revolved around the 3 main aspects of the region

THE 3 C's of GURGAON



CLIMATE



CULTURE



CHANGE



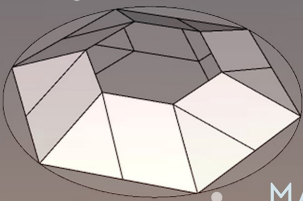
THE SKIRT



TWIRL

A cherished tradition is its folk dance.

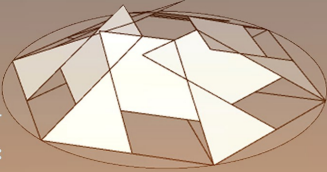
One of the captivating scenes of the dance is the annular twirl of skirts-GHOOMAR.



MANIFEST

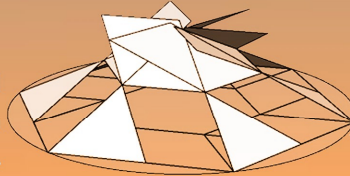
When enhanced the canopy translates into a central space. An area that attracts activity.

Bringing in the climate aspect of the canopy- the motion must provide:
1. Horizontal protection from the sun during hot summer days.

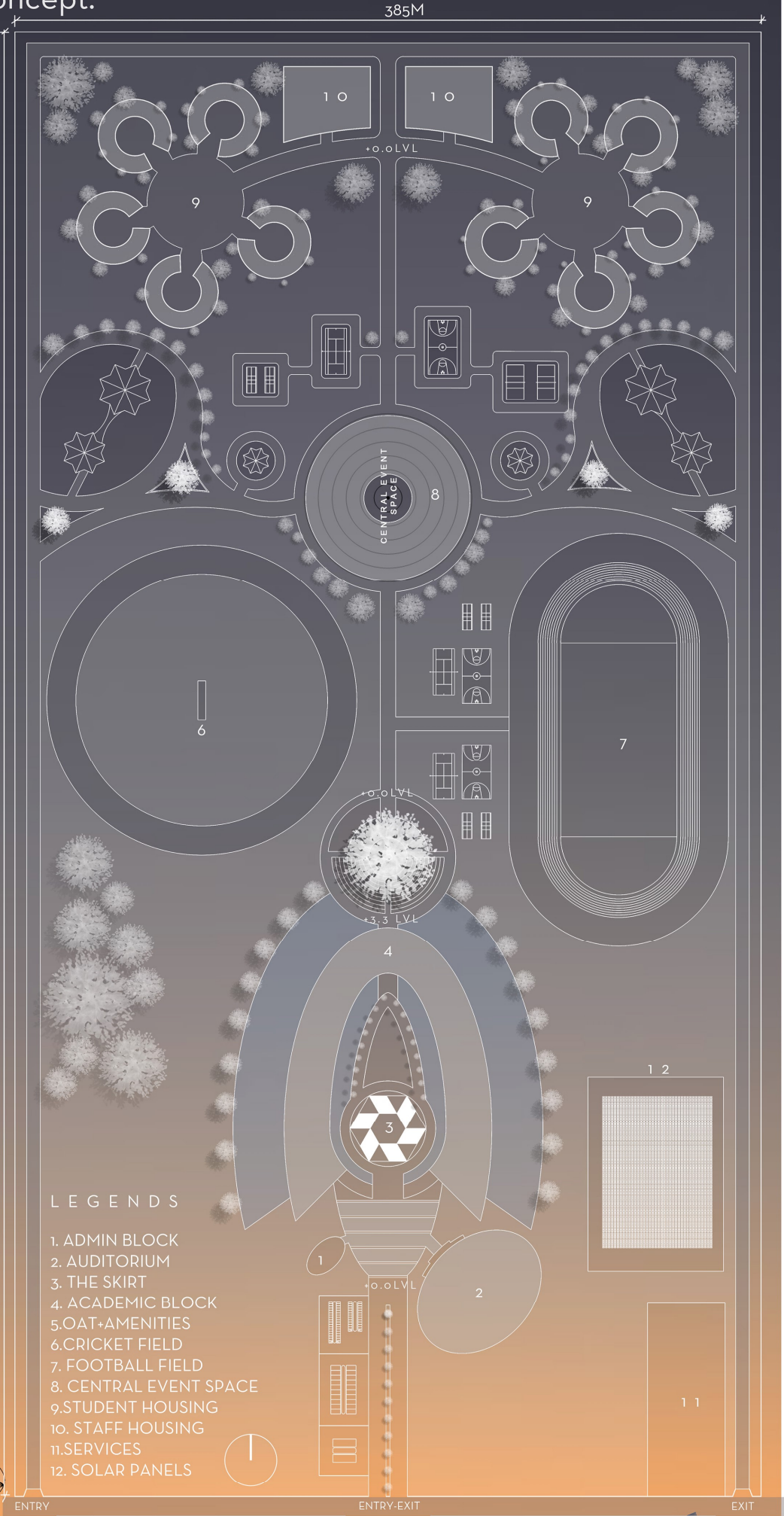


EVOLVE

2. Vertical protection from the cold breeze with access to light during harsh winters.



CANOPY

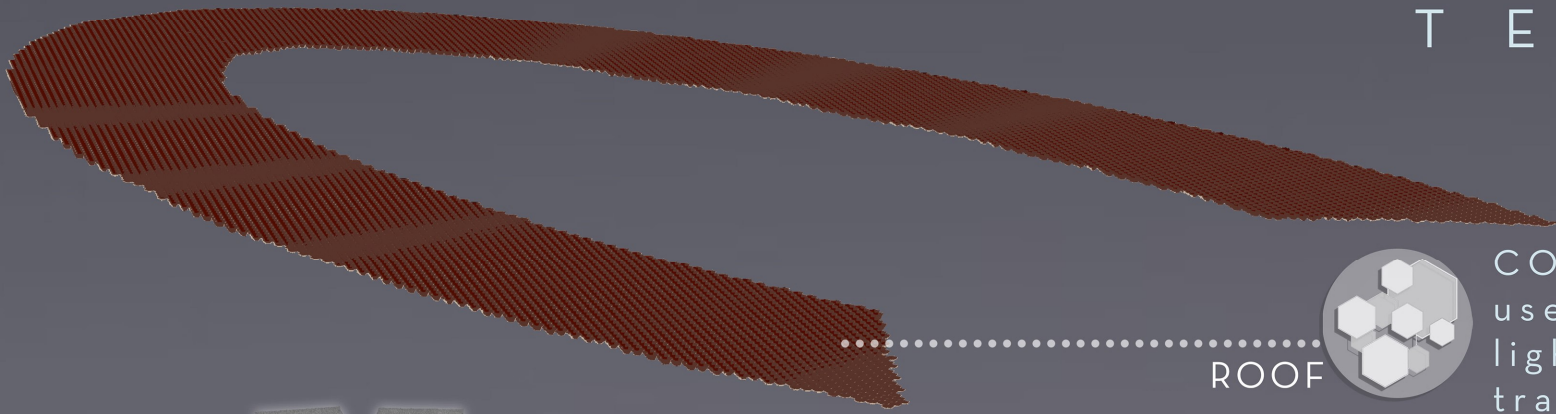


THE GURUGRAM

I N T E R N A T I O N A L S C H O O L

Exploring different kinds of steel and applying it into innovative architectural elements.

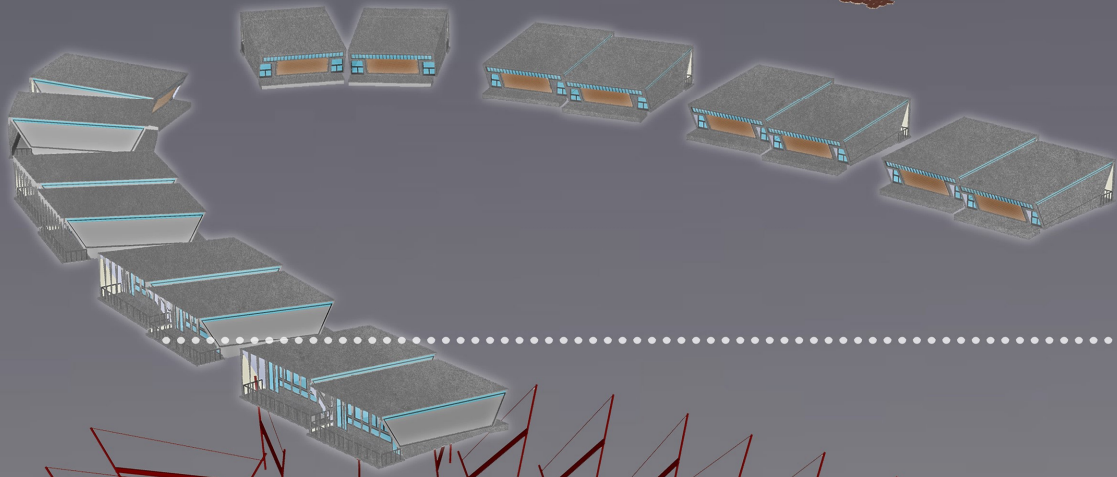
S T E E L T E X T U R E S



ROOF



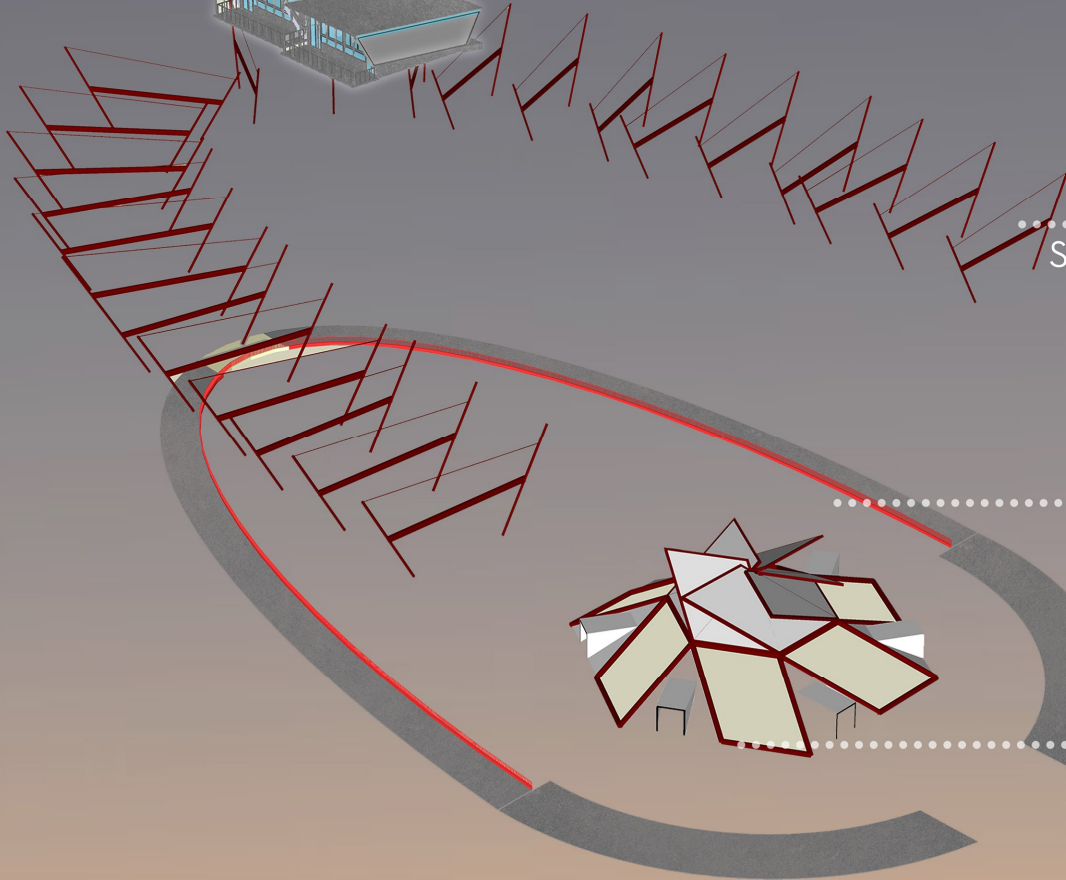
CORTON STEEL sheets are used to achieve maximum lighting and reduce the transfer of heat using hexagonal shapes.



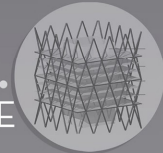
PODS



CORTON STEEL cut louvres are installed in balconies to allow natural light and cross ventilation. Louvres impart a strong architectural language to the exterior.

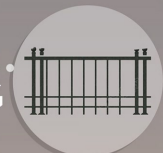


STRUCTURE



STAINLESS STEEL structure with steel tubular suspensions.

RAILING

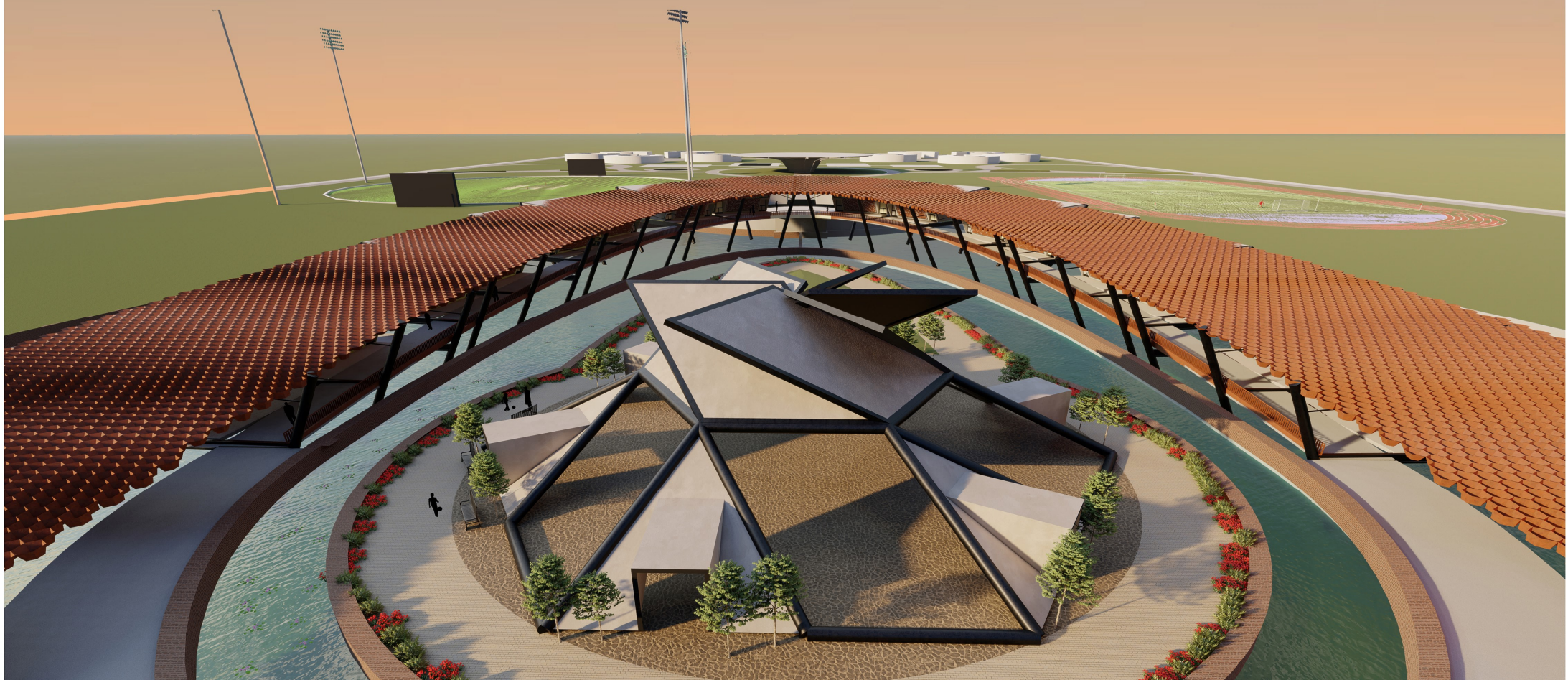


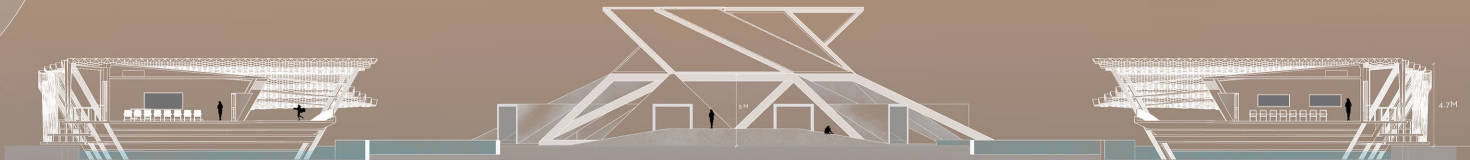
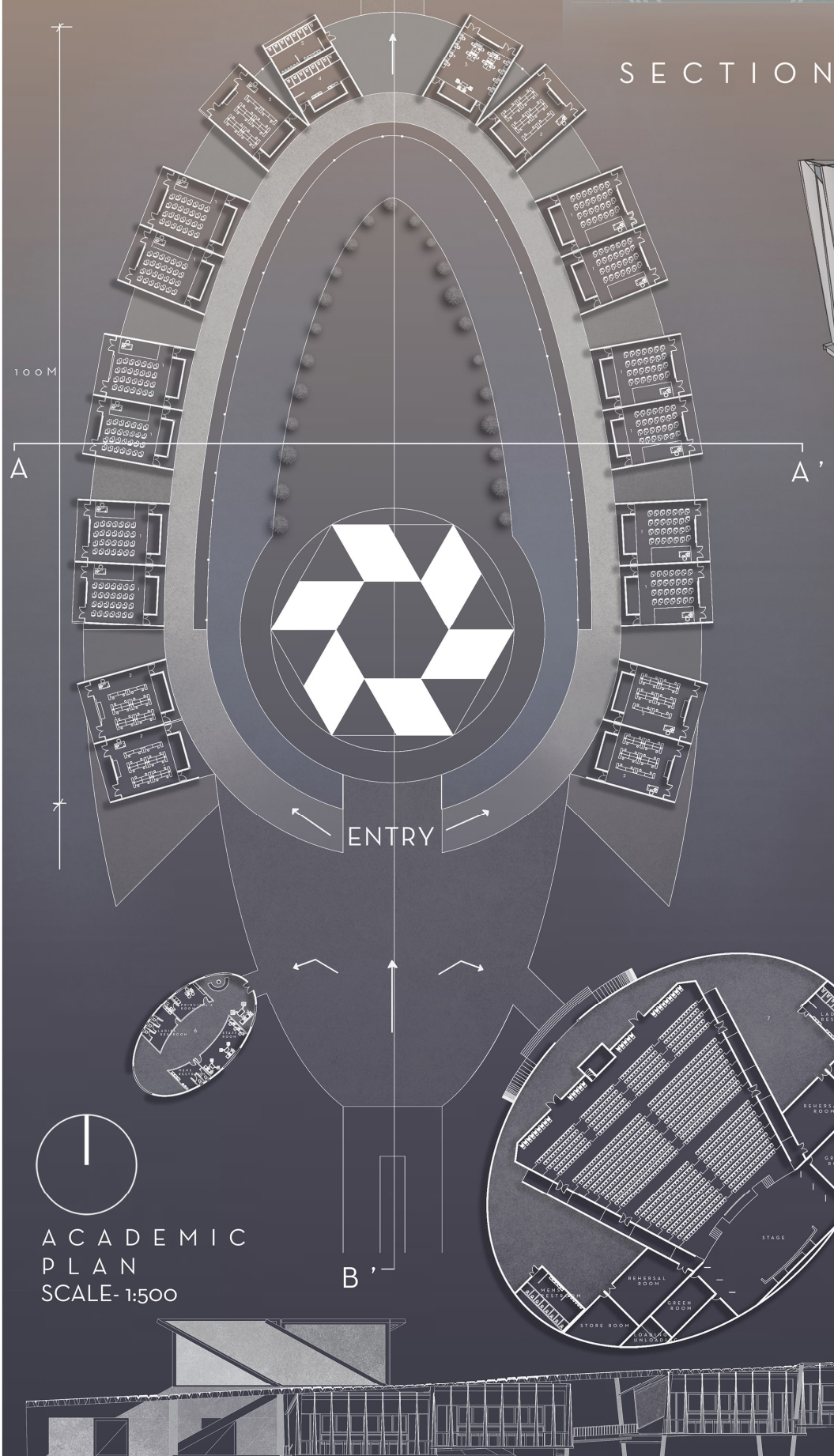
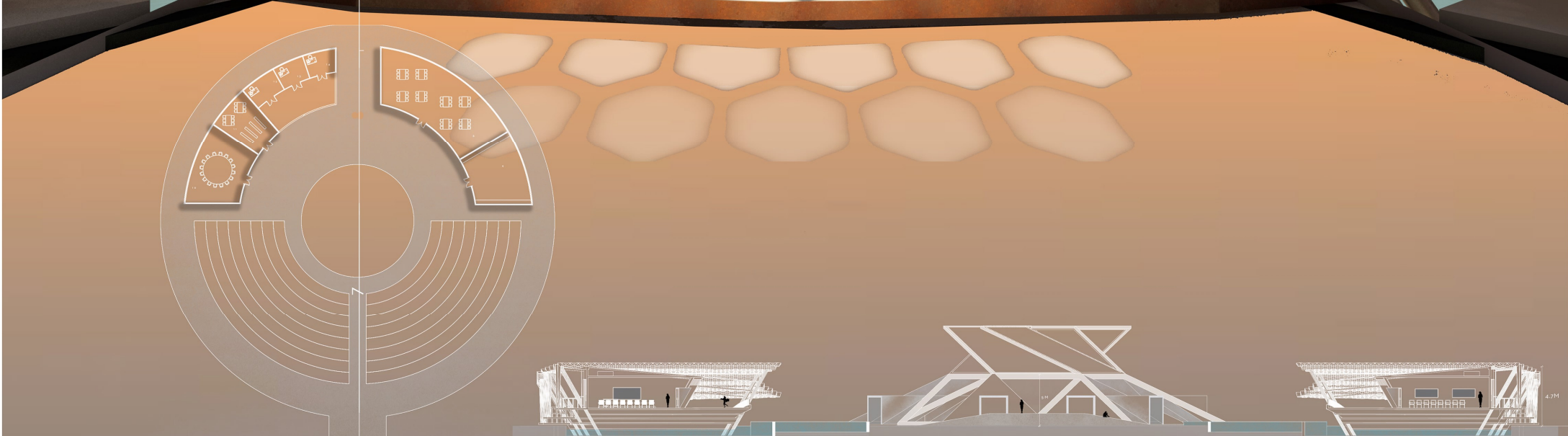
CORTON STEEL fins are used as railing for the ramps which acts as a proper visual barrier.

THE SKIRT

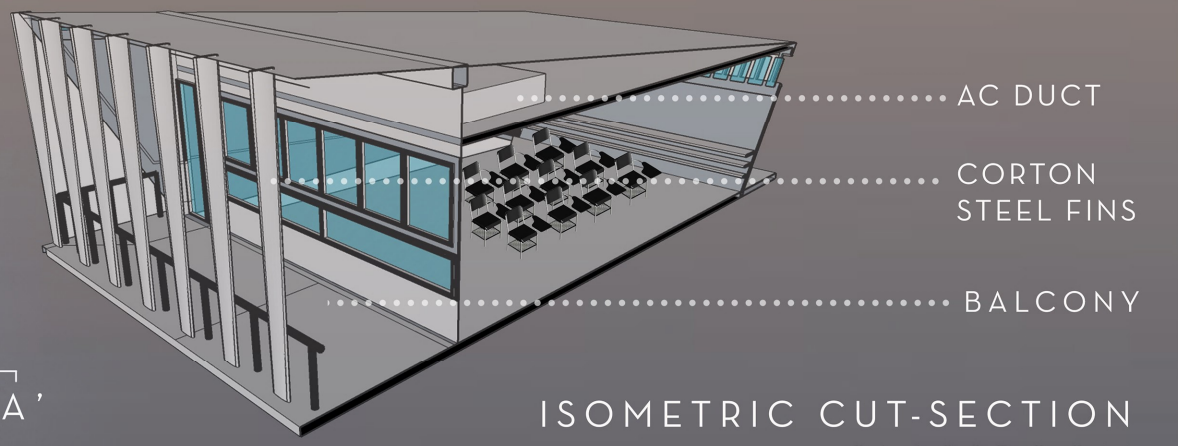


STAINLESS STEEL tubular rods of 60cm diameter has been used as the frame for the central canopy.





SECTION AA'

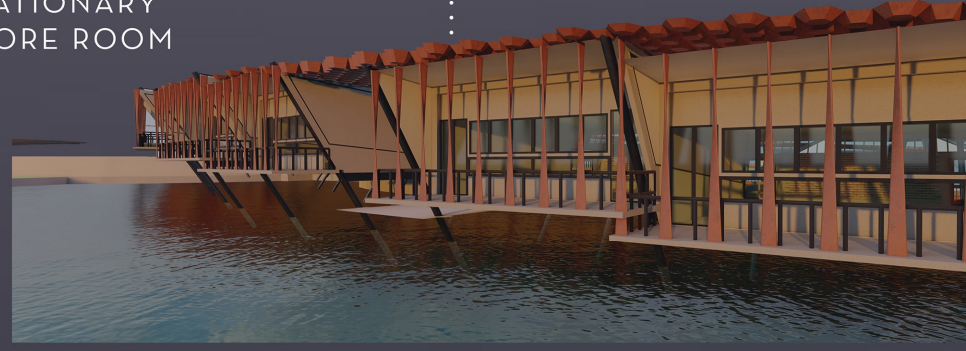


ISOMETRIC CUT-SECTION CLASSROOM

LEGENDS

- 1. CLASS ROOMS
- 2. LABS
- 3. STAFFROOM
- 4. LADIES RESTROOM
- 5. MENS RESTROOM
- 6. ADMIN
- 7. AUDITORIUM
- 8. DINING AREA
- 9. KITCHEN
- 10. MUSIC ROOM
- 11. LIBRARY
- 12. INFIRMARY
- 12. STATIONARY
- 13. STORE ROOM

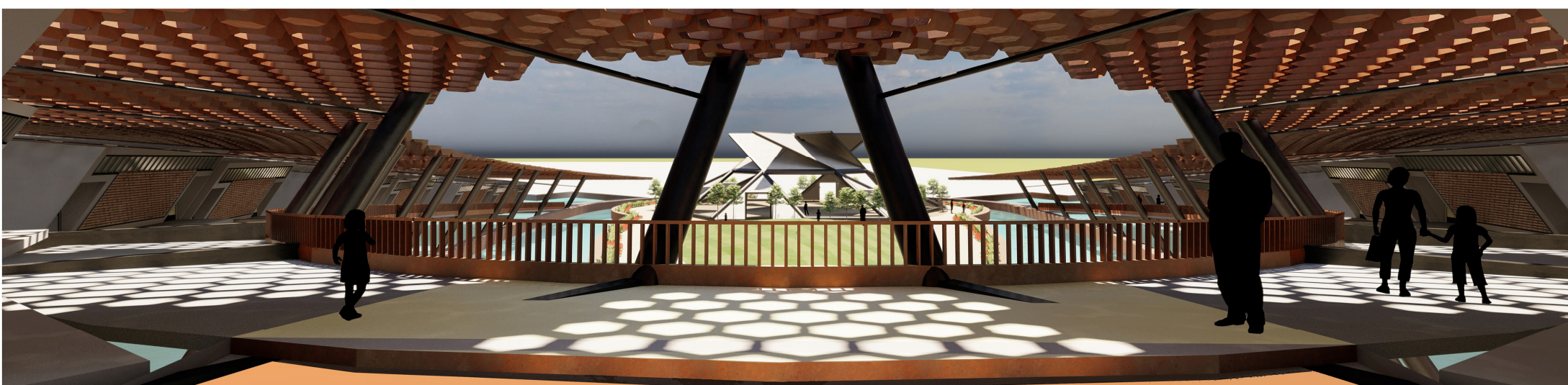
CORTEN STEEL FOR VERTICAL LOUVRES & ROOF



ACADEMIC PLAN
SCALE- 1:500

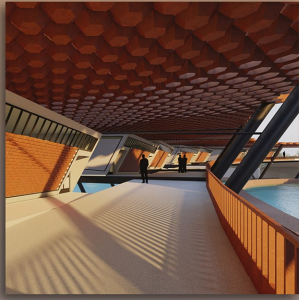
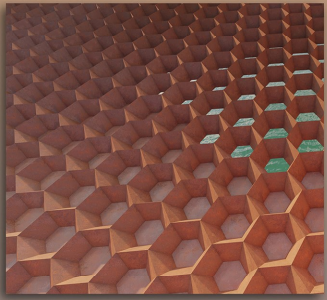


ELEVATION A



H E A T & L I G H T

The aim of the roof was to protect the interiors from maximum direct sunlight but provide enough light through its truncated openings.

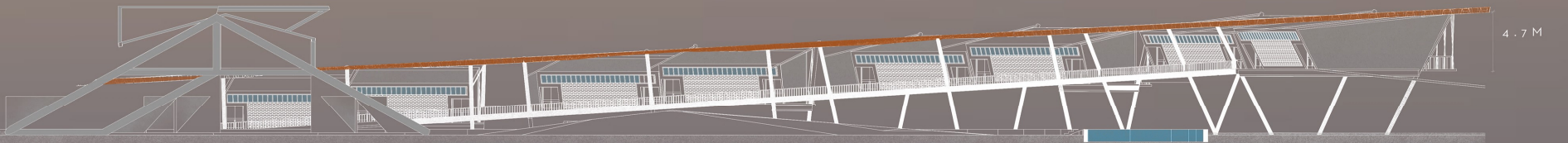


S T R U C T U R A L S T A B I L I T Y

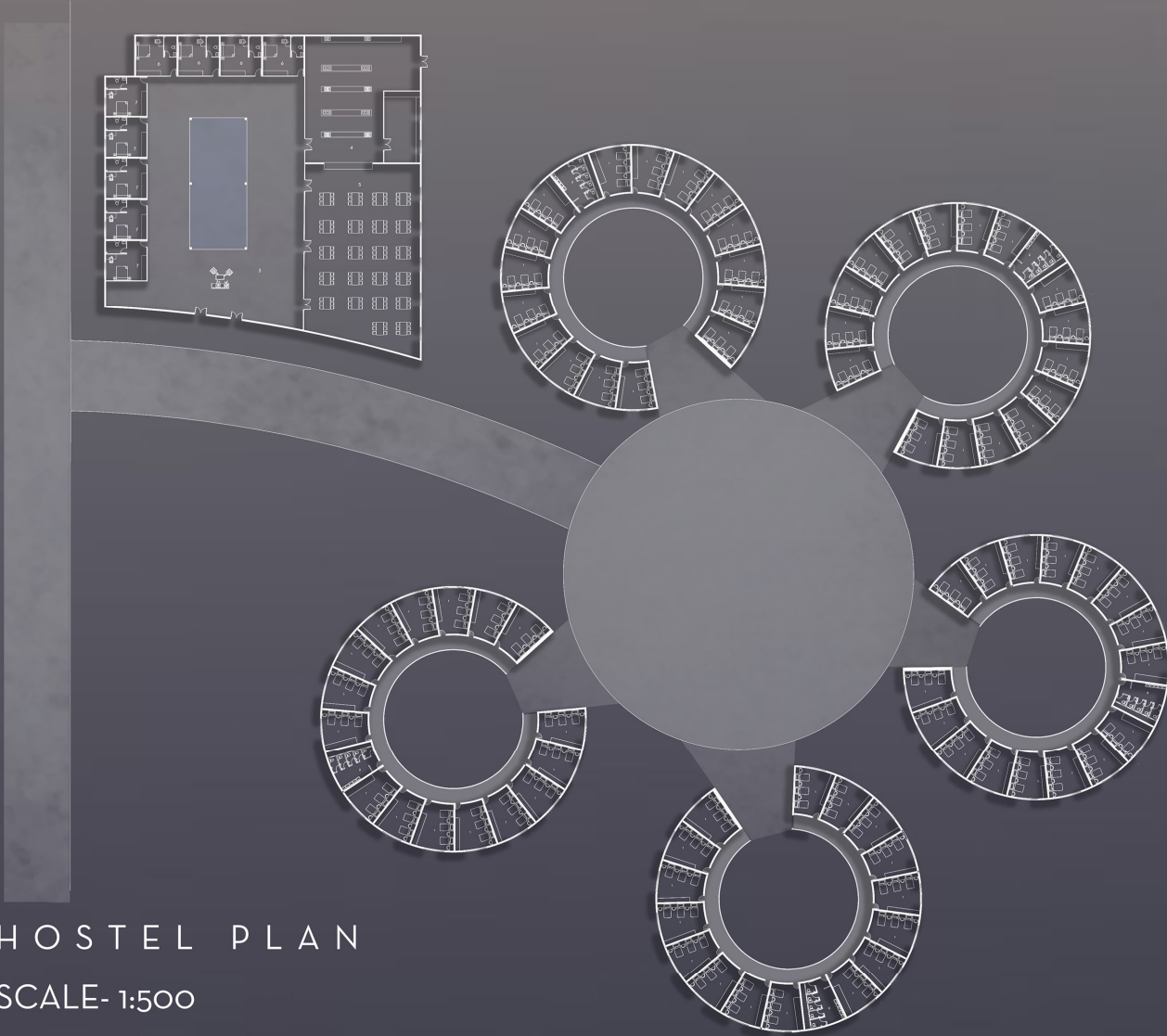
'THE HONEYCOMB CONJECTURE'

A number of hexagonal openings are provided which give the structure sturdiness and strength.

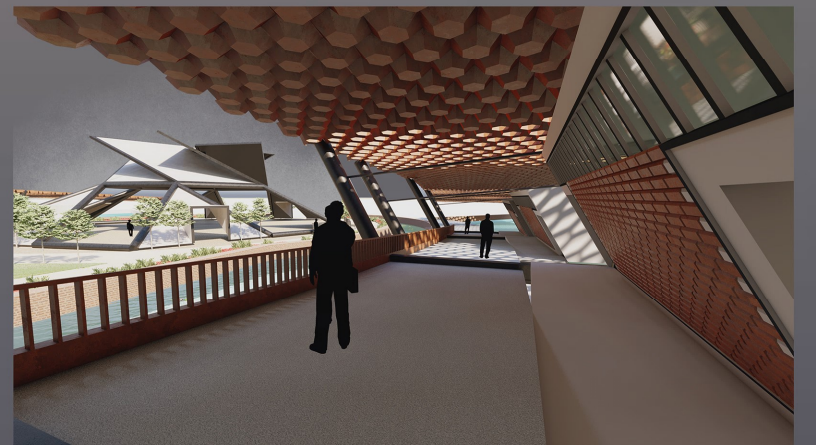
MATERIAL-Corton Steel



SECTION BB'

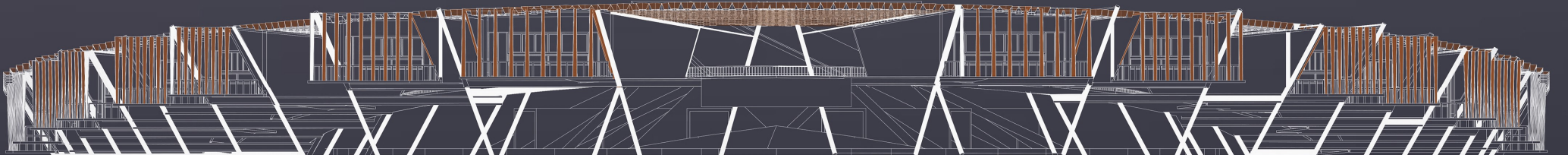


HOSTEL PLAN
SCALE- 1:500



L E G E N D S

1. BEDROOMS
2. WASHROOMS
3. LOBBY
4. KITCHEN
5. DINING SPACE
6. WARDEN ROOMS
7. GUEST ROOMS



ELEVATION B

THE GURUGRAM
INTERNATIONAL SCHOOL